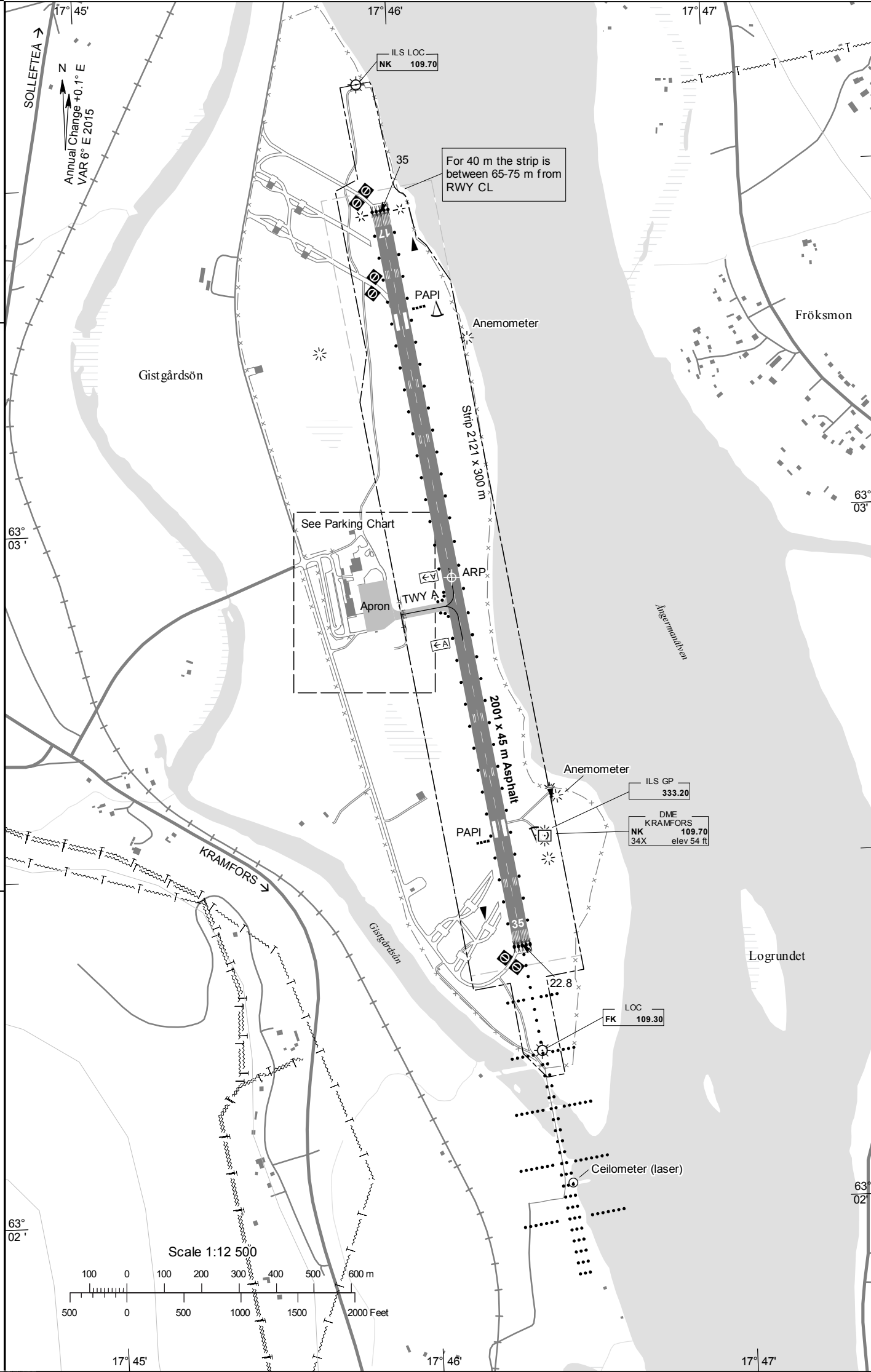


LFLV

CHANGE: RWY 35 Aiming Point Mark relocated. Reduced number of stands, editorial.

AIRAC AMDT 6/2014 13 NOV 2014



ARP 630255N 0174608E

AD ELEV 34 FEET

LEGEND See GEN 2.3

Dimensions in m, ELEV in ft

TWY NR	WIDTH	Surface Bearing strength	Day marking		Taxiway lighting	
			Centerline Holding	Edge Centerline	RGL Stopbar	RGL
A	23 m	ASPH PCN 30 F/B/X/T	CL HLDG	EDGE		RGL

REMARK: ACN 45 accepted occasionally

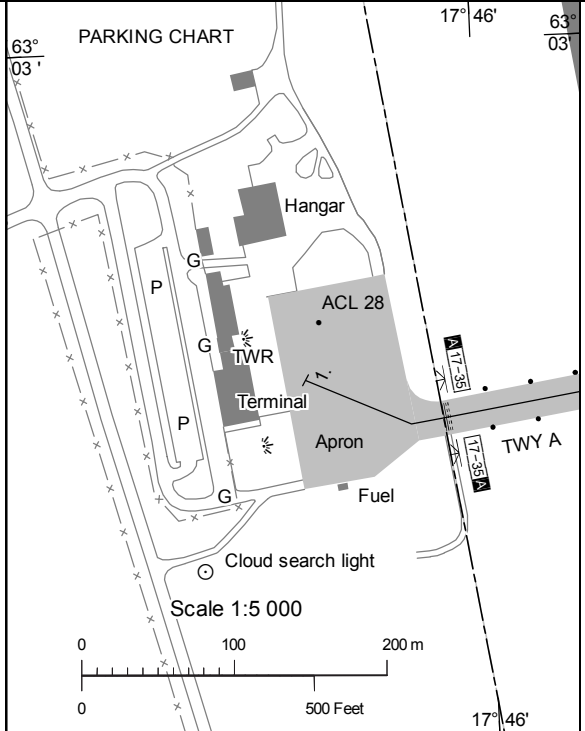
INS Coordinates for Aircraft Stands			
APRON Surface Bearing strength	NR	COORD	ELEV
ASPH PCN 30 F/B/X/T			

REMARK: ACN 45 accepted occasionally

AFIS 122.150 MHz

RWY NR	TRUE & MAG BRG	THR PSN Geoid undulation	Bearing strength	THR ELEV and highest ELEV of TDZ of precision APCH RWY	Declared distances				Approach and runway lighting				
					TORA	TODA	ASDA	LDA	APCH	THR TRID TDZ	VASIS (MEHT)	Edge	End
17	171.53° GEO 166° MAG	630326.91N 0174557.39E GUND 86 ft	PCN 30 F/B/X/T	THR 35 ft	2001	2001	2001	2001		THR Green TRID LIH	PAPI Left/3.25° (49.2 ft)	2001/60 m White Caution zone 600 m yellow LIL/LIH	Red
35	351.53° GEO 346° MAG	630222.99N 0174618.36E GUND 86 ft	PCN 30 F/B/X/T	THR 22.8 ft TDZ 25 ft	2001	2001	2001	2001	Calvert Cat I 900 m LIL/LIH	THR Green	PAPI Left/3.25° (57.4 ft)	2001/60 m White Caution zone 600 m yellow LIL/LIH	Red

REMARK: ACN 45 accepted occasionally.
REDL located 4.5 m from RWY edge.
Electronic flashing approach system lights 660-410 m before THR 35.



AIP SWEDEN

AERODROME CHART - ICAO

AD 2 ESNK 2-1
KRAMFORS-SOLLEFTEA